

Geology and Soils – Sources/Constraints Plan Legend

Reference	Feature Classification	Eastings	Northings	Record Type	Name and/or Description
C01	Current Land Use	418972	281466	Farm	Heath Farm
C02	Current Land Use	420235	283174	Depot	DHL Stonebridge Trailer Park
C03	Current Land Use	418733	282307	Industrial	Office Furniture & Equipment; Central Design Services
C04	Current Land Use	419292	282892	Industrial	Commercial Cleaning Services - J M Ellis Holdings Ltd
C05	Current Land Use	419617	281352	Farm	Home Farm
C06	Current Land Use	420667	283088	Farm	Nursery Cottages
C07	Current Land Use	420023	284941	Farm	Common Farm
C08	Current Land Use	418149	280359	Industrial	Bath Resurfacing - Alscot Bathroom Company
C09	Current Land Use	418121	280344	Industrial	Floor Cleaning & Polishing Equipment - Manufacturers & Distributors - Koalaflor
C10	Current Land Use	418780	283682	Railway Station	Railway station - Birmingham International
C11	Current Land Use	418863	283334	Industrial	Cement Manufacturers & Distributors - Tarmac

Geology and Soils – Sources/Constraints Plan Legend

Reference	Feature Classification	Eastings	Northings	Record Type	Name and/or Description
C12	Current Land Use	420676	283028	Industrial	Crane Hire, Sales & Service - N M T Crane Hire
C13	Current Land Use	419308	283351	Industrial	Catering Equipment - Procook
C14	Current Land Use	419185	280613	Fly Tipping	Fly-tipped material comprising used tyres and demolition rubble
C15	Current Land Use	419125	280597	Fly Tipping	Fly-tipped material comprising used tyres
C16	Current Land Use	418699	283481	Car Park	Airport/Train station car park
C17	Current Land Use	418524	283550	Car Park	Airport/Train station expanded car park
C18	Current Land Use	418646	283176	Car Park	NEC/Airport Overspill car park (Car Park 6)
C19	Current Land Use	419745	283546	Car Park	NEC Eastern
C20	Current Land Use	419646	283185	Car Park	NEC SE 1
C21	Current Land Use	419482	283115	Car Park	NEC Southern Carpark
C22	Current Land Use	419488	283241	Car Park	NEC Central

Geology and Soils – Sources/Constraints Plan Legend

Reference	Feature Classification	Eastings	Northings	Record Type	Name and/or Description
C23	Current Land Use	419357	283242	Car Park	NEC centre south
C24	Current Land Use	419216	283195	Car Park	NEC SW
C25	Current Land Use	419150	283335	Car Park	NEC West - Genting Arena
C26	Current Land Use	419643	283706	Car Park	NEC NE 1
C27	Current Land Use	419759	283756	Car Park	NEC NE 2
C28	Current Land Use	419741	283962	Car Park	NEC North
C29	Current Land Use	419677	283357	Car Park	NEC SE 2
C30	Current Land Use	419050	283083	Fuel Filling Stations	Bickenhill Service station
C31	Current Land Use	418104	280329	Industrial	Garage Services - Chris Morgan-Cettler
C32	Current Land Use	418040	280420	Industrial	Furniture Manufacturers - Home & Office - Oaktree Frames
C33	Current Land Use	418104	280328	Industrial	Car Accessories Manufacturers - Trekkers Ltd

Geology and Soils – Sources/Constraints Plan Legend

Reference	Feature Classification	Eastings	Northings	Record Type	Name and/or Description
C34	Current Land Use	419541	285580	Industrial	Lingerie & Hosiery Manufacturers & Wholesalers - Scala Agenturen Ltd
C35	Current Land Use	418675	280684	Farm	Hampton Lane Farm
C36	Current Land Use	418603	280343	Farm	Walford Hall Farm
C37	Current Land Use	418801	282254	Farm	Grange Farm
C38	Current Land Use	418556	281815	Nursery (Horticulture)	Braceys Nurseries and Garden Centre
C39	Current Land Use	418659	282377	Farm	Glebe Farm
C40	Current Land Use	418800	282439	Farm	Church Farm
C41	Current Land Use	419008	279780	Sewage Works	STW Barston - Birmingham Tame and Rea Drainage Board
C42	Current Land Use	418914	282143	Farm	Hazel Farm
C43	Current Land Use	418896	282406	Farm	Yew Tree Farm
C44	Current Land Use	418541	282882	Sewage Works	Sewage Pumping Station (Clock Lane)

Geology and Soils – Sources/Constraints Plan Legend

Reference	Feature Classification	Eastings	Northings	Record Type	Name and/or Description
C45	Current Land Use	418912	283268	Car Park	NEC E5 Car park
C46	Current Land Use	419519	283435	Pond	Pendigo Lake (man-made)
C47	Current Land Use	420651	283288	Quarry	Current mineral extraction (footprint extended to account for HS2 source data)
C48	Current Land Use	418975	283304	Electricity Substation	Unnamed
C49	Current Land Use	419056	283198	Electricity Substation	Unnamed
C50	Current Land Use	419637	283838	Electricity Substation	Unnamed
C51	Current Land Use	419864	286028	Pond	Coleshill Pool
C52	Current Land Use	419553	285487	Industrial	Warehouse (Fujitsu) - Part of Birmingham Business Park - expanded 2006 and 2017
C53	Current Land Use	419005	283021	Electricity Substation	Adjacent to Esso Fuel Filling Station
C54	Current Land Use	419993	282983	Electricity Substation	Associated with The National Motorcycle Museum
C55	Current Land Use	-	-	Railway	London and North Western Railway / Birmingham Loop

Geology and Soils – Sources/Constraints Plan Legend

Reference	Feature Classification	Eastings	Northings	Record Type	Name and/or Description
C56	Current Land Use	418200	283946	Airport	Birmingham International Airport
C57	Current Land Use	419264	283070	Farm	Longacre Farm
C58	Current Land Use	420191.00	284916.00	Nursery (Horticulture)	Melbicks Garden Centre
H01	Historical Land Use	420676	283028	Industrial	Sand, Gravel & Other Aggregates - Lafarge Aggregates
H02	Historical Land Use	419050	283083	Industrial	Salvage Dealers - Motor Salvage (UK) Ltd
H03	Historical Land Use	420264	283234	Industrial	Crane Hire, Sales & Service - Dewsbury & Proud
H04	Historical Land Use	418863	283334	Industrial	Cement Manufacturers & Distributors - Tarmac
H05	Historical Land Use	418915	283255	Industrial	Medical Equipment Manufacturers - Ferraris Group Plc
H06	Historical Land Use	418914	283254	Industrial	Telecommunications Equipment & Systems - Detewe Ltd
H07	Historical Land Use	418915	283255	Industrial	Freight Forwarders- Now Cargo Ltd
H08	Historical Land Use	418915	283254	Industrial	Freight Forwarders- First Port Shipping

Geology and Soils – Sources/Constraints Plan Legend

Reference	Feature Classification	Eastings	Northings	Record Type	Name and/or Description
H09	Historical Land Use	419546	284060	Industrial	Pottery Manufacturers & Suppliers - Denby
H10	Historical Land Use	420676	283028	Industrial	Concrete & Mortar Ready Mixed - Lafarge Aggregates Ltd
H11	Historical Land Use	418168	280333	Farm	Oak Farm
H12	Historical Land Use	418059	280468	Works	Unnamed
H13	Historical Land Use	418245	283322	Farm	Hurdle Hall
H14	Historical Land Use	418292	283087	Works	Scaffolding Factory
H15	Historical Land Use	418292	283087	Depot	Unnamed
H16	Historical Land Use	418292	283087	Tank	Tank associated with Depot at same location
H17	Historical Land Use	418486	282695	Sewage Works	Sewage Works for Meriden R.D.C.
H18	Historical Land Use	420264	283079	Farm	Cottage Farm
H19	Historical Land Use	419907	284071	Farm	Warren Farm

Geology and Soils – Sources/Constraints Plan Legend

Reference	Feature Classification	Eastings	Northings	Record Type	Name and/or Description
H20	Historical Land Use	420604	283033	Brick works	Unnamed
H21	Historical Land Use	420604	283033	Tank	Associated with brick works
H22	Historical Land Use	419329	282713	Nursery (Horticulture)	Glasshouses, Church Lane
H23	Historical Land Use	420235	283174	Industrial	A.Arnall Garage Services
H24	Historical Land Use	420235	283174	Farm	Myrtle Cottage Farm
H25	Historical Land Use	420604	283033	Refuse Tip	Unnamed
H26	Historical Land Use	420604	283033	Depot	Brickworks depot
H27	Historical Land Use	420688	282992	Works	Works
H28	Historical Land Use	420529	283276	Depot	Depot
H29	Historical Land Use	419747	285394	Farm	Common Farm Cottage
H30	Historical Land Use	420072	285284	Farm	Brackenlands Farm

Geology and Soils – Sources/Constraints Plan Legend

Reference	Feature Classification	Eastings	Northings	Record Type	Name and/or Description
H31	Historical Land Use	-	-	Railway	Disused Railway - Midland Railway
H32	Historical Land Use	-	-	Railway	Disused Railway - Mineral Railway
H33	Historical Land Use	419238	282777	Industrial	Incol Pressworks Ltd - Mechanical Engineering Industrial Plant
H34	Historical Land Use	418432	282695	Depot	Croggers Road Service
H35	Historical Land Use	418165	282905	Fuel Filling Stations	Fina Petrol Station
H36	Historical Land Use	418165	282905	Industrial	Anne's Pantry - Vehicle Repair Shop
H37	Historical Land Use	418851	282507	Works	Unnamed
L01	Potential Gassing Features (Landfills, Waste and Infilled Ground)	420460	282685	Other Pits/Quarries/ Tips/Waste	Mercia Mudstone Group; Common Clay and Shale - Opencast - Arden Landfill
L02	Potential Gassing Features (Landfills, Waste and Infilled Ground)	420577	283057	Other Pits/Quarries/ Tips/Waste	Mercia Mudstone Group, Common Clay and Shale - Opencast - Middle Bickenhill Brick Works
L03	Potential Gassing Features (Landfills, Waste and Infilled Ground)	419211	282049	Other Pits/Quarries/ Tips/Waste	Tip-mainly builders waste (from PSSR source data)

Geology and Soils – Sources/Constraints Plan Legend

Reference	Feature Classification	Eastings	Northings	Record Type	Name and/or Description
L04	Potential Gassing Features (Landfills, Waste and Infilled Ground)	420109	283367	Other Pits/Quarries/ Tips/Waste	Contractors unsuitable tip (from PSSR/HS2 source data)
L05	Potential Gassing Features (Landfills, Waste and Infilled Ground)	418821	280779	Other Pits/Quarries/ Tips/Waste	Agricultural waste dump (from PSSR source data)
L06	Potential Gassing Features (Landfills, Waste and Infilled Ground)	419043	280972	Other Pits/Quarries/ Tips/Waste	Previous agricultural waste dump (from PSSR source data)
L07	Potential Gassing Features (Landfills, Waste and Infilled Ground)	418635	280378	Other Pits/Quarries/ Tips/Waste	Pit infilled with waste (from PSSR source data)
L08	Potential Gassing Features (Landfills, Waste and Infilled Ground)	419924	283791	Other Pits/Quarries/ Tips/Waste	Contractors unsuitable tip (from PSSR source data)
L09	Potential Gassing Features (Landfills, Waste and Infilled Ground)	419185	280613	Other Pits/Quarries/ Tips/Waste	Infilled Ground - Pit partially backfilled with domestic refuse (from PSSR source data)
L10	Potential Gassing Features (Landfills, Waste and Infilled Ground)	418268	282394	Historic Landfill	Glebe Farm - 30th June 1988 to 14th July 1989 - Deposited Waste included Inert Waste - Mercon Construction Limited
L11	Potential Gassing Features (Landfills, Waste and Infilled Ground)	418135	281629	Historic Landfill	Castle Hills Farm - 31st December 1977 to 31st December 1978 - Deposited Waste included Inert Waste - Bulldog Demolition Limited
L12	Potential Gassing Features (Landfills, Waste and Infilled Ground)	418280	281753	Historic Landfill	Bickenhill Lane - 31st January 1977 to 31st May 1981 - Deposited Waste included Inert Waste - Sreidan Contractors Limited

Geology and Soils – Sources/Constraints Plan Legend

Reference	Feature Classification	Eastings	Northings	Record Type	Name and/or Description
L13	Potential Gassing Features (Landfills, Waste and Infilled Ground)	420252	282166	Historic Landfill	Jacksons Brickworks - 31st December 1990 to ? - Deposited Waste included Inert, Industrial, Commercial, Household and Special Waste - BFI Packington
L14	Potential Gassing Features (Landfills, Waste and Infilled Ground)	419200	281706	Historic Landfill	Shadowbrook Lane - 1st January 1984 to 21st April 1989 - Deposited Waste included Inert Waste - B J O'Reilly and Sons Limited
L15	Potential Gassing Features (Landfills, Waste and Infilled Ground)	418535	282895	Historic Landfill	Site Corner Clock Lane - 14th January 1985 to ? - Waste type? - Licence holder?
L16	Potential Gassing Features (Landfills, Waste and Infilled Ground)	420471	282950	Historic Landfill	Jacksons Brickworks - 31st December 1990 to ? - Deposited Waste included Inert, Industrial, Commercial, Household and Special Waste - BFI Packington
L17	Potential Gassing Features (Landfills, Waste and Infilled Ground)	419034	283307	Historic Landfill	Windbridge Nurseries - 31st December 1979 to 31st December 1982 - Deposited Waste included Inert Waste -West Midlands (Excavations) Limited
L18	Potential Gassing Features (Landfills, Waste and Infilled Ground)	418256	282399	Local Authority Recorded Landfill	Mercon Construction, Catherine-De-Barnes, Bickenhill, Solihull - Waste? - Closure?
L19	Potential Gassing Features (Landfills, Waste and Infilled Ground)	418134	281629	Local Authority Recorded Landfill	Castlehill Farm, Bickenhill, Waste? - Closure?
L20	Potential Gassing Features (Landfills, Waste and Infilled Ground)	418173	280295	Local Authority Recorded Landfill	Friday Lane, Catherine-De-Barnes, Waste? - Closure? - Ref: SL548
L21	Potential Gassing Features (Landfills, Waste and Infilled Ground)	418359	280168	Local Authority Recorded Landfill	Friday Lane, Catherine-De-Barnes, Waste? - Closure? - Ref - SL988

Geology and Soils – Sources/Constraints Plan Legend

Reference	Feature Classification	Eastings	Northings	Record Type	Name and/or Description
L22	Potential Gassing Features (Landfills, Waste and Infilled Ground)	419100	281700	Local Authority Recorded Landfill	Shadowbrook Lane, Hampton-In-Arden, Solihull, Waste? - Closure? - Ref: SL578
L23	Potential Gassing Features (Landfills, Waste and Infilled Ground)	420255	282167	Local Authority Recorded Landfill	Jacksons Brickworks, Coventry Road, Bickenhill - Waste? - Closure? - Ref: SL355
L24	Potential Gassing Features (Landfills, Waste and Infilled Ground)	418300	282400	Registered Landfill Sites	Mercon Construction Ltd - Licence: SL 588, Clean Hardcore, Natural - Occur.Sands,Gravels,Clays, Subsoil,Topsoil - 1st July 1988 - Licence lapsed/cancelled/defunct/not applicable/surrenderedCancelled
L25	Potential Gassing Features (Landfills, Waste and Infilled Ground)	418300	281770	Registered Landfill Sites	Sheridan Contractors - Licence: SL 218 - Old Licence - Wastes Not To Hand - Licence lapsed/cancelled/defunct/not applicable/surrenderedCancelled
L26	Potential Gassing Features (Landfills, Waste and Infilled Ground)	419190	281730	Registered Landfill Sites	B J O' Reilly & Sons Ltd - Ref: SL 578, Clean Hardcore, Natural Occur.Sands,Gravels,Clays, Subsoil,Topsoil - Licence lapsed/cancelled/defunct/not applicable/surrenderedCancelled
L27	Landfills and Other Waste Features	418632	279978	BGS Recorded Landfill	Walford Hall Farm - BGS Recorded Landfill - ,
L28	Potential Gassing Features (Landfills, Waste and Infilled Ground)	418374	282409	BGS Recorded Landfill	Church Farm - BGS Recorded Landfill - ,
L29	Potential Gassing Features (Landfills, Waste and Infilled Ground)	420627	282974	BGS Recorded Landfill	Jacksons Brickworks - BGS Recorded Landfill Site
L30	Potential Gassing Features (Landfills, Waste and Infilled Ground)	418196	279791	Historic Landfill	Friday Lane, 31st December 1991 to ? - Deposited Waste included Inert and Industrial Waste, and Liquid Sludge - Eastcote Nurseries (Solihull) Limited

Geology and Soils – Sources/Constraints Plan Legend

Reference	Feature Classification	Eastings	Northings	Record Type	Name and/or Description
L31	Potential Gassing Features (Landfills, Waste and Infilled Ground)	418632	279978	Historic Landfill	Walford Hall Farm - 31st December 1971 to ? - Deposited Waste included Industrial and Commercial Waste - Licence holder:?
L32	Potential Gassing Features (Landfills, Waste and Infilled Ground)	418348	280175	Historic Landfill	Friday Lane, 31st December 1991 to ? - Deposited Waste included Inert and Industrial Waste, and Liquid Sludge - Eastcote Nurseries (Solihull) Limited
L33	Potential Gassing Features (Landfills, Waste and Infilled Ground)	418172	280297	Historic Landfill	Friday Lane, 31st December 1984 to 31st December 1988 - Deposited waste included Inert Waste - B M Fisher
L34	Potential Gassing Features (Landfills, Waste and Infilled Ground)	418382	282535	Historic Landfill	Opposite Church Farm - 31st December 1970 to 31st December 1972 - Deposited Waste included Industrial, Commercial and Household Waste - Licence holder unknown
L35	Potential Gassing Features (Landfills, Waste and Infilled Ground)	417940	282614	Historic Landfill	Hargrave Farm - 27th October 1983 to 6th April 1988 - Deposited Waste included Inert Waste - R F Hadley
L36	Potential Gassing Features (Landfills, Waste and Infilled Ground)	417922	282934	Historic Landfill	Hargrave Farm - 27th October 1983 to 6th April 1988 - Deposited Waste included Inert Waste - R F Hadley
L37	Potential Gassing Features (Landfills, Waste and Infilled Ground)	420627	282974	Historic Landfill	Rear of Jacksons Brickworks - 31st December 1966 to 31st March 1972 - Waste type? - Licence holder?
L38	Potential Gassing Features (Landfills, Waste and Infilled Ground)	420003	285052	Historic Landfill	Brackenlands Farm, 6th May 1975 to 15th February 1977 - Waste type? - Licence holder?
L39	Potential Gassing Features (Landfills, Waste and Infilled Ground)	418185	279889	Local Authority Recorded Landfill	Friday Lane, Catherine-De-Barnes, Waste? - Closure

Geology and Soils – Sources/Constraints Plan Legend

Reference	Feature Classification	Eastings	Northings	Record Type	Name and/or Description
L40	Potential Gassing Features (Landfills, Waste and Infilled Ground)	418200	282800	Registered Landfill Sites	Bulldog Demolition Ltd - Licence: SL 42, Authorised: Excavated Natural Materials , Hardcore And Rubble - Prohibited: Asbestos Sheeting, Poisonous, Noxious, Polluting Wastes
L41	Potential Gassing Features (Landfills, Waste and Infilled Ground)	418357	280178	Licensed Waste Management Facilities (Location)	Eastcote Nurseries - Friday Lane Landfill Site - Expired - 12th November 2002
L42	Potential Gassing Features (Landfills, Waste and Infilled Ground)	420253	282167	Licensed Waste Management Facilities (Landfill Boundaries)	Sita - Jackson Brickworks - Inactive - Issued: 3rd August 1982
L43	Potential Gassing Features (Landfills, Waste and Infilled Ground)	420517	283074	Licensed Waste Management Facilities (Location)	Enterprise Managed Services Ltd - Household Waste Amenity Sites, Issued: 12th November 1993
L44	Potential Gassing Features (Landfills, Waste and Infilled Ground)	418197	279790	Licensed Waste Management Facilities (Landfill Boundaries)	Eastcote Nurseries - Friday Lane Landfill Site - 42216 - Friday Lane Landfill Site, Friday Lane, Catherine-De-Barnes, Solihull, West Midlands, B92 0HT - Landfills Taking Other Wastes (Construction, Demolition, Dredgings) - Large (Equal to or greater than
L45	Potential Gassing Features (Landfills, Waste and Infilled Ground)	418357	280178	Licensed Waste Management Facilities (Landfill Boundaries)	Eastcote Nurseries - Friday Lane Landfill Site - 42216 - Friday Lane Landfill Site, Friday Lane, Catherine-De-Barnes, Solihull, West Midlands, B92 0HT - Landfills Taking Other Wastes (Construction, Demolition, Dredgings) - Large (Equal to or greater than
L46	Potential Gassing Features (Landfills, Waste and Infilled Ground)	418300	280000	Registered Landfill Sites	Eastcote Nurseries (Solihull) Ltd- SL 988 MOD 1- Friday Lane, Catherine-De-Barnes, Solihull, West Midlands- Wood Lane, Barston, SOLIHULL, West Midlands, B92 0JL- Environment Agency - Midlands Region, Upper Trent Area- Landfill- Small (Equal to or greater

Geology and Soils – Sources/Constraints Plan Legend

Reference	Feature Classification	Eastings	Northings	Record Type	Name and/or Description
L47	Potential Gassing Features (Landfills, Waste and Infilled Ground)	418200	280000	Registered Landfill Sites	BM Fisher - SL 548 - Friday Lane, Catherine-De-Barnes, Solihull, West Midlands - Eastcote Nurseries, Wood Lane, Barston, SOLIHULL, West Midlands, B92 0JL - Environment Agency - Midlands Region, Upper Trent Area - Landfill - No known restriction on source
L48	Potential Gassing Features (Landfills, Waste and Infilled Ground)	419000	283150	Registered Landfill Sites	Licence Holder: West Midlands Excavation - SL 316 - Site location: Windbridge Nurseries, Coventry Road, Bickenhill, Solihull, West Midlands - Operator Location: Vale Pitts Road, Garrets Green Industrial Estate, BIRMINGHAM, West Midlands, B33 0TD - Enviro
L50	Potential Gassing Features (Landfills, Waste and Infilled Ground)	419211	282049	Other Pits/Quarries/ Tips/Waste	Refuse Tip, Church Farm
L51	Potential Gassing Features (Landfills, Waste and Infilled Ground)	419553	283702	Infilled Pond	Spinney Pool
L52	Potential Gassing Features (Landfills, Waste and Infilled Ground)	419922	285811	Infilled Pond	Coleshill Pool - splits into 2 ponds in 1999, and southerly pool infilled
L53	Potential Gassing Features (Landfills, Waste and Infilled Ground)	419850	284430	Other Pits/Quarries/ Tips/Waste	Quarry identified from historical studies. Detailed historical mapping from the Envirocheck Report (2017) does not cover this and so this feature is carried through. It should be noted that the feature is not apparent from review of the historical mapping extracts included within historical studies, only from information within the text.
L54	Potential Gassing Features (Landfills, Waste and Infilled Ground)	420073	283852	Other Pits/Quarries/ Tips/Waste	Old Marl Pit

Geology and Soils – Sources/Constraints Plan Legend

Reference	Feature Classification	Eastings	Northings	Record Type	Name and/or Description
L55	Potential Gassing Features (Landfills, Waste and Infilled Ground)	-	-	Made Ground	Made Ground (from PSSR Geohazard Plans)
L56	Potential Gassing Features (Landfills, Waste and Infilled Ground)	420071	284034	Other Pits/Quarries/ Tips/Waste	Backfilled Borrow Pit (from HS2 source data)
R01	Pollution Incidents and Permitted Site Records	418100	281490	Pollution Incident	Grand Union Canal; Large Amount Of Rubbish Fridges Ect - 6th April 1999 - , - Receptor: Grand Union Canal
R02	Pollution Incidents and Permitted Site Records	418600	281550	Pollution Incident	Amenity Affected; Septic Tank Overflowing To Brook - 19th July 1996 , Receptor: River Blythe Catchment
R03	Pollution Incidents and Permitted Site Records	420200	283050	Pollution Incident	10 Litres Foam To Water; Foam type unknown; Cause of incident: Fire - 2nd December 1997, Receptor: Watercourse - River Blythe Catchment
R04	Pollution Incidents and Permitted Site Records	418041	280592	Local Authority Pollution Prevention Control	Air Pollution Control - Combustion of fuel manufactured from/or comprised of, solid waste - - Revoked
R05	Pollution Incidents and Permitted Site Records	419050	283083	Local Authority Pollution Prevention Control	Air Pollution Control - Petrol Filling Station (Eurogarages Ltd)
R06	Pollution Incidents and Permitted Site Records	419050	283083	Local Authority Pollution Prevention Control	Air Pollution Control - Petrol Filling Station (RontecLtd/Annes Pantry)
R07	Pollution Incidents and Permitted Site Records	418860	283339	Local Authority Pollution Prevention Control	Mobile screening and crushing processes (Tarmac Lafarge Ltd)
R08	Pollution Incidents and Permitted Site Records	420650	283039	Local Authority Pollution Prevention Control	Mobile screening and crushing processes (Armac Del)

Geology and Soils – Sources/Constraints Plan Legend

Reference	Feature Classification	Eastings	Northings	Record Type	Name and/or Description
R09	Pollution Incidents and Permitted Site Records	420680	283024	Local Authority Pollution Prevention Control	Blending, packing, loading and use of bulk cement (Lafarge Aggregates)
R10	Pollution Incidents and Permitted Site Records	420694	283011	Local Authority Pollution Prevention Control	Waste oil burners, less than 0.4MW net rated thermal input (Armac Demolition) - ,
R11	Pollution Incidents and Permitted Site Records	420677	283115	Local Authority Pollution Prevention Control	Mobile screening and crushing processes (Jones Plant Services Ltd) - ,
R12	Pollution Incidents and Permitted Site Records	418700	279600	Pollution Incident	Road Traffic Accident 1;000 Litres Aviation Kerosene; spill to watercourse - 16th January 1997 - , - Receptor: River Blythe Catchment
R13	Pollution Incidents and Permitted Site Records	417900	279000	Pollution Incident	Unknown Watercourse; Drums, Engine Blocks In Overflow; - 11th June 1999 - , - Receptor: River Blythe Catchment
R14	Pollution Incidents and Permitted Site Records	419100	279900	Pollution Incident	Eastcote Brook; Oil On Brook; Potable Water Supply Effected - 25th September 1997 - , - Receptor: River Blythe Catchment
R15	Pollution Incidents and Permitted Site Records	418300	280200	Pollution Incident	Organic wastes; Slurry Pit Is Discharging To Near-By Stream - 8th January 1998 - , - River Blythe Catchment
R16	Pollution Incidents and Permitted Site Records	420001	282701	Pollution Incident	Blythe Tributary; Foul Sewer Overflowing; Amenity Effected - 7th October 1997, Receptor: River Blythe Catchment
R17	Pollution Incidents and Permitted Site Records	419270	280160	Pollution Incident	Sewage effluent - SSSI Affected; Amenity Affected; Eastcote Brook; Turbid Final Effluent - 4th June 1996 - , - Receptor: SSSI? River Blythe Catchment
R18	Pollution Incidents and Permitted Site Records	419200	280100	Pollution Incident	Small Amount Of Diesel On Brook; Other Adverse Effects (Barston Water Reclamation Works, Friday Lane,) - 17th May 1997, Receptor: Watercourse - River Blythe Catchment
R19	Pollution Incidents and Permitted Site Records	418800	283500	Pollution Incident	Dark Grey Sludge And Oil From Culvert - 26th February 1997 - , - Receptor: Watercourse - River Blythe Catchment

Geology and Soils – Sources/Constraints Plan Legend

Reference	Feature Classification	Eastings	Northings	Record Type	Name and/or Description
R20	Pollution Incidents and Permitted Site Records	418150	282950	Pollution Incident	Chemicals - Unknown; 200-300 Kg White Crystals - 6th March 1996, - Receptor: Watercourse River Blythe Catchment
R21	Pollution Incidents and Permitted Site Records	418900	283400	Pollution Incident	Oil In Culvert / Discoloured; Oils - Diesel (Including Agricultural) - 16th May 1996, Receptor: Watercourse River Blythe Catchment
R22	Pollution Incidents and Permitted Site Records	418900	283500	Pollution Incident	Amenity Affected; Oil In Culvert - 3rd December 1996 - 418900, - Receptor: Watercourse - River Blythe
R23	Pollution Incidents and Permitted Site Records	420490	282780	Integrated Pollution Prevention And Control	Remada Soil Treatment Facility, Arden Brickworks - GP3835AV - Effective Date: ? - Status: Valid
R24	Pollution Incidents and Permitted Site Records	418990	280310	Substantiated Pollution Incident Register	Authority: Environment Agency - Midlands Region, West Area - Incident date: 14th December 2003 Reference: 206625 - Water Impact: Category 1 - Major Incident - Air Impact: Category 4 - No Impact - Land Impact: Category 3 - Minor Incident - Located by supp
W02	Water Abstractions and Discharge Consents	419289	282631	Discharge Consent	Sewage Discharges - Final/Treated Effluent - Not Water Company - Discharge to freshwater (River Blythe Catchment) - Issued: 22nd June 2009 -
W03	Water Abstractions and Discharge Consents	419081	281350	Discharge Consent	Sewage Discharges - Final/Treated Effluent - Not Water Company - Discharge to Shadow Brook - Issued: 2nd July 2001
W04	Water Abstractions and Discharge Consents	419300	281700	Discharge Consent	Sewage Effluent (Domestic property) - Discharge to groundwater - Issued: 24th October 1975
W05	Water Abstractions and Discharge Consents	418900	281400	Discharge Consent	Sewage Discharges - Final/Treated Effluent - Not Water Company (domestic/farm buildings) - Discharge to Soakaway/underlying strata -12th March 1971
W06	Water Abstractions and Discharge Consents	420440	282930	Discharge Consent	Trade Effluent Discharge-Site Drainage - Discharge to Freshwater (River Blythe catchment) - 23rd February 2005 to 14th December 2015
W07	Water Abstractions and Discharge Consents	419900	283900	Discharge Consent	Sewage Treatment Works - Final Effluent - Discharge to River Blythe - Issued: 12th May 1969 -

Geology and Soils – Sources/Constraints Plan Legend

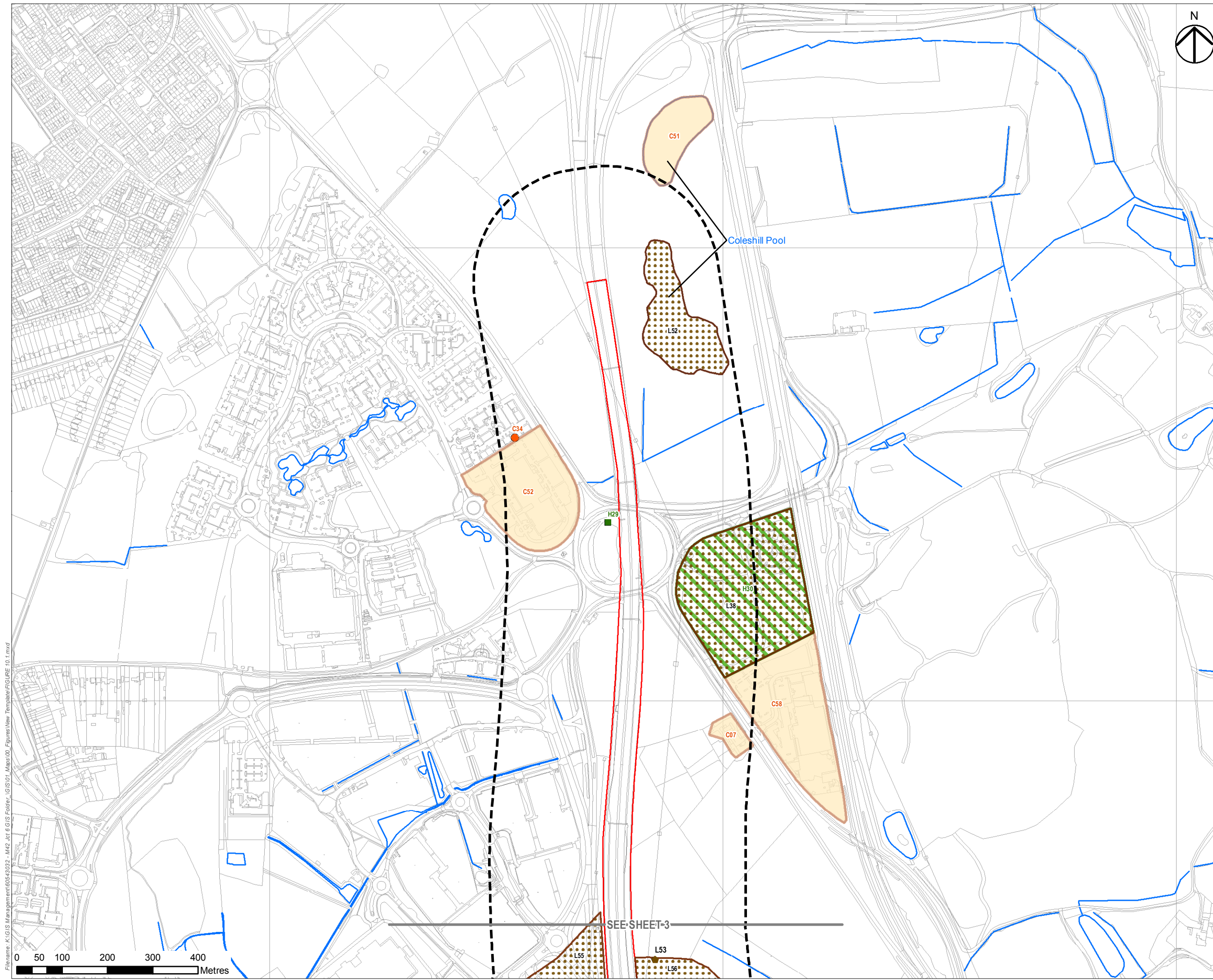
Reference	Feature Classification	Eastings	Northings	Record Type	Name and/or Description
W13	Water Abstractions and Discharge Consents	418000	279000	Discharge Consent	Sewage Discharges - Final/Treated Effluent - Not Water Company - Soakaway/Underlying strata - From 30th March 1977
W14	Water Abstractions and Discharge Consents	418600	279600	Discharge Consent	Public Sewage: Storm Sewage Overflow - Discharge to River Blythe Tributary - From: 31st December 1968
W15	Water Abstractions and Discharge Consents	418020	279150	Discharge Consent	Sewage Discharges - Final/Treated Effluent - Not Water Company - Soakaway/Underlying strata - From: 11th December 1979 -
W16	Water Abstractions and Discharge Consents	419140	280060	Discharge Consent	Sewage Discharges - Stw Storm Overflow/Storm Tank - Water Company - Eastcote Brook - Effective Date: 1st January 2010 - Issued Date: 14th October 2008
W17	Water Abstractions and Discharge Consents	419140	280060	Discharge Consent	Sewage Discharges - Stw Storm Overflow/Storm Tank - Water Company - Eastcote Brook - Revocation Date: 31st December 2009
W18	Water Abstractions and Discharge Consents	419140	280060	Discharge Consent	Sewage Discharges - Stw Storm Overflow/Storm Tank - Water Company - Eastcote Brook - Revocation Date: 30th December 1998
W19	Water Abstractions and Discharge Consents	419140	280060	Discharge Consent	Sewage Discharges - Stw Storm Overflow/Storm Tank - Water Company - Eastcote Brook - Revocation Date: 30th March 2005
W20	Water Abstractions and Discharge Consents	419140	280060	Discharge Consent	Sewage Discharges - Stw Storm Overflow/Storm Tank - Water Company - Eastcote Brook - Revocation Date: 21st December 1998
W21	Water Abstractions and Discharge Consents	419140	280060	Discharge Consent	Sewage Discharges - Stw Storm Overflow/Storm Tank - Water Company - Eastcote Brook - Revocation Date: 1st November 1995
W22	Water Abstractions and Discharge Consents	419140	280060	Discharge Consent	Sewage Discharges - Final/Treated Effluent - Water Company - Eastcote Brook - Revocation Date: 1st November 1995
W23	Water Abstractions and Discharge Consents	418600	280600	Discharge Consent	Sewage Effluent - Groundwater - Issued date: 18th January 1968

Geology and Soils – Sources/Constraints Plan Legend

Reference	Feature Classification	Eastings	Northings	Record Type	Name and/or Description
W24	Water Abstractions and Discharge Consents	419600	281400	Discharge Consent	Sewage Discharges - Final/Treated Effluent - Not Water Company - Discharge to River Blythe tributary - Issued: 9th May 1972
W25	Water Abstractions and Discharge Consents	419270	280160	Discharge Consent	Sewage Discharges - Final/Treated Effluent - Water Company - Discharge to Eastcote Brook - 21st August 1980 to 1st November 1995
W26	Water Abstractions and Discharge Consents	419400	280280	Discharge Consent	Sewage Discharges - Final/Treated Effluent - Water Company - Discharge to Eastcote Brook - Issued: 14th October 2008
W27	Water Abstractions and Discharge Consents	419400	280280	Discharge Consent	Sewage Discharges - Final/Treated Effluent - Water Company - Discharge to Eastcote Brook - 28th June 2004 to 31st December 2009
W28	Water Abstractions and Discharge Consents	419400	280280	Discharge Consent	Discharge Of Other Matter-Crude Effluent- Discharge to Eastcote Brook - Issued: 28th June 2004
W29	Water Abstractions and Discharge Consents	419400	280280	Discharge Consent	Sewage Discharges - Final/Treated Effluent - Water Company - Discharge to Eastcote Brook - 22nd December 1998 to 30th December 1998
W30	Water Abstractions and Discharge Consents	419400	280280	Discharge Consent	Discharge Of Other Matter-Crude Effluent - Discharge to Eastcote Brook - 22nd December 1998
W31	Water Abstractions and Discharge Consents	419400	280280	Discharge Consent	Sewage Discharges - Final/Treated Effluent - Water Company - Discharge to Eastcote Brook - 22nd December 1998 to 30th March 2005
W32	Water Abstractions and Discharge Consents	419400	280280	Discharge Consent	Discharge of other matter - Crude Effluent - Discharge to Eastcote Brook - 22nd December 1998 to 30th March 2005
W33	Water Abstractions and Discharge Consents	419400	280280	Discharge Consent	Sewage Discharges - Final/Treated Effluent - Water Company - Discharge to Eastcote Brook - 2nd November 1995 to 21st December 1998
W34	Water Abstractions and Discharge Consents	419400	280280	Discharge Consent	Sewage Discharges - Final/Treated Effluent - Water Company - Discharge to Eastcote Brook - 21st August 1980 to 1st November 1995

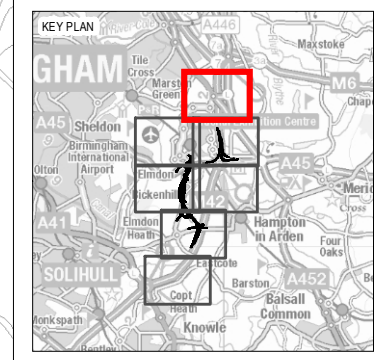
Geology and Soils – Sources/Constraints Plan Legend

Reference	Feature Classification	Eastings	Northings	Record Type	Name and/or Description
W35	Water Abstractions and Discharge Consents	418850	283200	Discharge Consent	Sewage Discharges - Pumping Station - Not Water Company - Discharge to Hollywell Brook Tributary - Issued: 11th January 1991
W41	Water Abstractions and Discharge Consents	418900	283100	Discharge Consent	Sewage Final Effluent - Discharge to Groundwater - Issued: 19th June 1985
W42	Water Abstractions and Discharge Consents	418900	283100	Discharge Consent	Sewage Discharges - Final/Treated Effluent - Not Water Company- Discharge to Soakaway/underlying strata - Issued: 19th June 1985
W43	Water Abstractions and Discharge Consents	419100	283100	Discharge Consent	Sewage Effluent - Discharge to groundwater - Issued: 28th June 1974
W44	Water Abstractions and Discharge Consents	418949	283324	Discharge Consent	Sewage Discharges - Final/Treated Effluent - Not Water Company - Discharge to freshwater/River Blythe Tributary - 18th September 2008 to 1st April 2014
W45	Water Abstractions and Discharge Consents	420600	283000	Discharge Consent	Trade Effluent Discharge-Site Drainage - Discharge to freshwater (River Blythe) - 19th July 2000 to 23rd February 2005
W46	Water Abstractions and Discharge Consents	420660	283050	Discharge Consent	Sewage Treatment Works - Final Effluent - Discharge to freshwater - Pasture Farm Brook (Blythe catchment?) - Issued: 5th June 1986 -
W47	Water Abstractions and Discharge Consents	420670	283060	Discharge Consent	Sewage Discharges - Final/Treated Effluent - Not Water Company - Discharge to freshwater (River Blythe tributary) - Issued: 17th December 2003 -



NOTES
THIS DRAWING IS TO BE READ IN CONJUNCTION WITH ALL OTHER RELEVANT DOCUMENTATION.

- LEGEND
- THE SCHEME
 - LIMITS OF LAND TO BE ACQUIRED OR USED PERMANENTLY OR TEMPORARILY (THE ORDER LIMITS)
 - LIMITS OF LAND TO BE TEMPORARILY ACQUIRED FOR SIGNAGE INSTALLATION
 - LAND NOT INCLUDED WITHIN THE ORDER LIMITS
 - 250M BUFFER
 - POTENTIAL CONTAMINATION SOURCES
 - CURRENT LAND USE
 - HISTORIC LAND USE
 - LANDFILLS AND OTHER WASTE FEATURES
 - ▲ OTHER REGULATED ACTIVITIES
 - ⊗ DISCHARGE CONSENTS
 - POTENTIAL GASSING FEATURES (LANDFILLS, WASTE AND INFILLED GROUND)
 - HISTORICAL LAND USE
 - CURRENT LAND USE



FIRST ISSUE	GB	JG	12/12/18	C01
Revision Details	By	Check	Date	Suffix

Purpose of Issue
DCO SUBMISSION

Client
Highways England
Floor 5
Two Colmore Square
38 Colmore Circus
B4 6BN



Development Consent Order Number
TR010027

Project Title
M42 JUNCTION 6 IMPROVEMENT

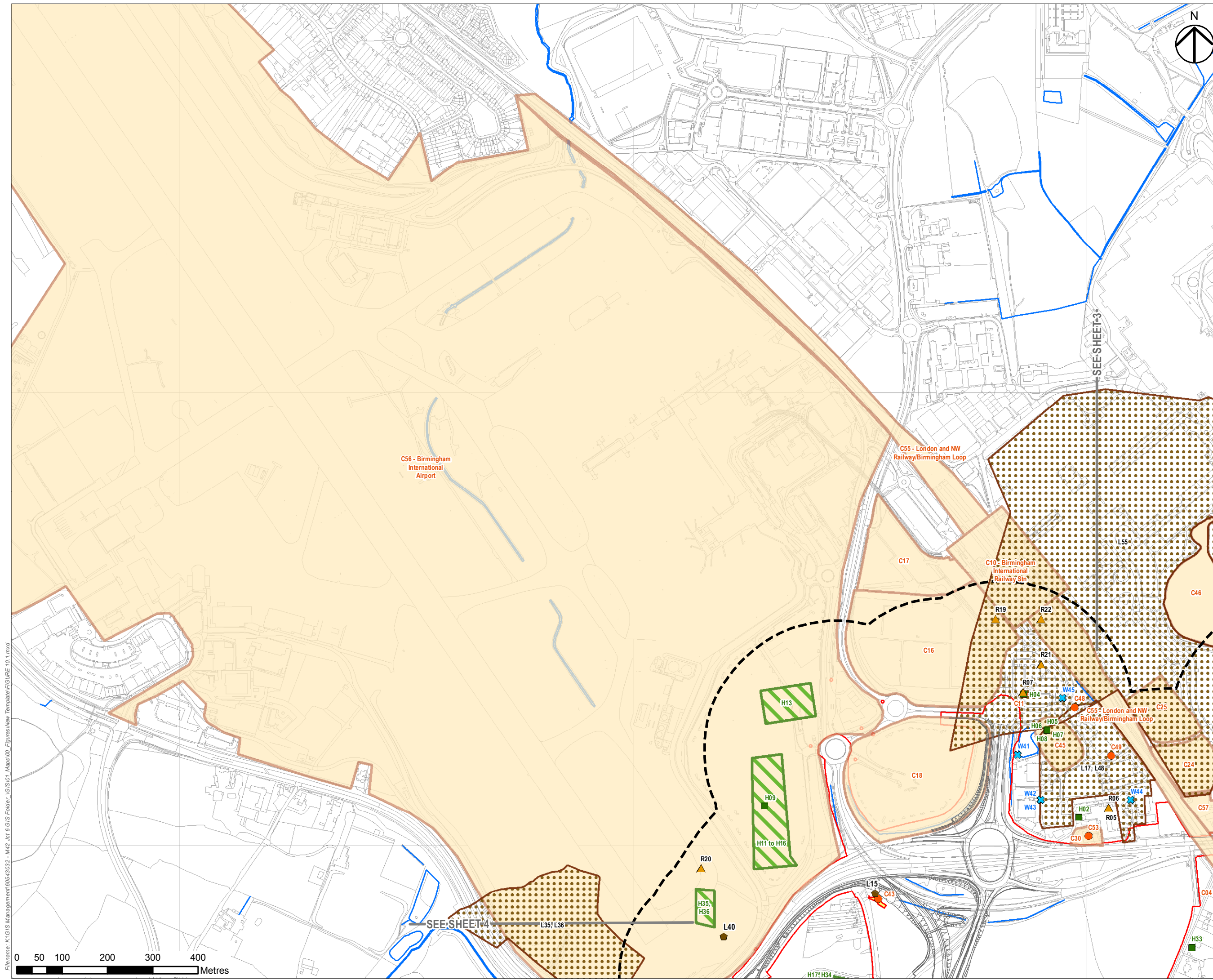
Drawing Title
FIGURE 10.1 SOURCES/CONSTRAINTS PLAN SHEET 1 OF 7

Designed RG	Drawn GB	Checked RG	Approved JG	Date 12/12/18
Internal Project No 60543032		Suitability D7		
Scale @ A3 1:7,500		Zone M42		

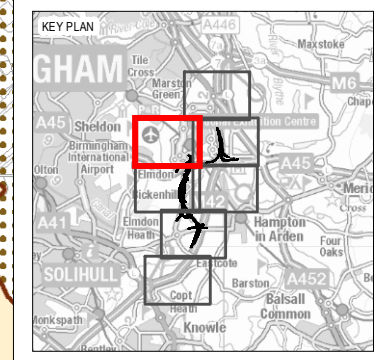
THIS DOCUMENT HAS BEEN PREPARED PURSUANT TO AND SUBJECT TO THE TERMS OF AECOM'S APPOINTMENT BY ITS CLIENT. AECOM ACCEPTS NO LIABILITY FOR ANY USE OF THIS DOCUMENT OTHER THAN BY ITS ORIGINAL CLIENT OR FOLLOWING AECOM'S EXPRESS AGREEMENT TO SUCH USE, AND ONLY FOR THE PURPOSES FOR WHICH IT WAS PREPARED AND PROVIDED.

Drawing Number HE551485 -ACM	Originator -EGN-	Volume -DR-DC-0001	Rev C01
Location M42_SW_ZZ_ZZ		Type 1	Role 1

Filename: K:\GIS Management\60543032 - M42 Jct 6 GIS Folder - GIS01 - Maps\100 - Figures\New Template\FIGURE 10.1.mxd



- NOTES**
THIS DRAWING IS TO BE READ IN CONJUNCTION WITH ALL OTHER RELEVANT DOCUMENTATION.
- LEGEND**
- THE SCHEME
 - LIMITS OF LAND TO BE ACQUIRED OR USED PERMANENTLY OR TEMPORARILY (THE ORDER LIMITS)
 - LIMITS OF LAND TO BE TEMPORARILY ACQUIRED FOR SIGNAGE INSTALLATION
 - LAND NOT INCLUDED WITHIN THE ORDER LIMITS
 - 250M BUFFER
- POTENTIAL CONTAMINATION SOURCES**
- CURRENT LAND USE
 - HISTORIC LAND USE
 - LANDFILLS AND OTHER WASTE FEATURES
 - ▲ OTHER REGULATED ACTIVITIES
 - ✕ DISCHARGE CONSENTS
 - POTENTIAL GASSING FEATURES (LANDFILLS, WASTE AND INFILLED GROUND)
 - HISTORICAL LAND USE
 - CURRENT LAND USE



FIRST ISSUE	GB	JG	12/12/18	C01
Revision Details	By	Check	Date	Suffix

Purpose of Issue
DCO SUBMISSION

Client
Highways England
Floor 5
Two Colmore Square
38 Colmore Circus
B4 6BN



Development Consent Order Number
TR010027

Project Title
M42 JUNCTION 6 IMPROVEMENT

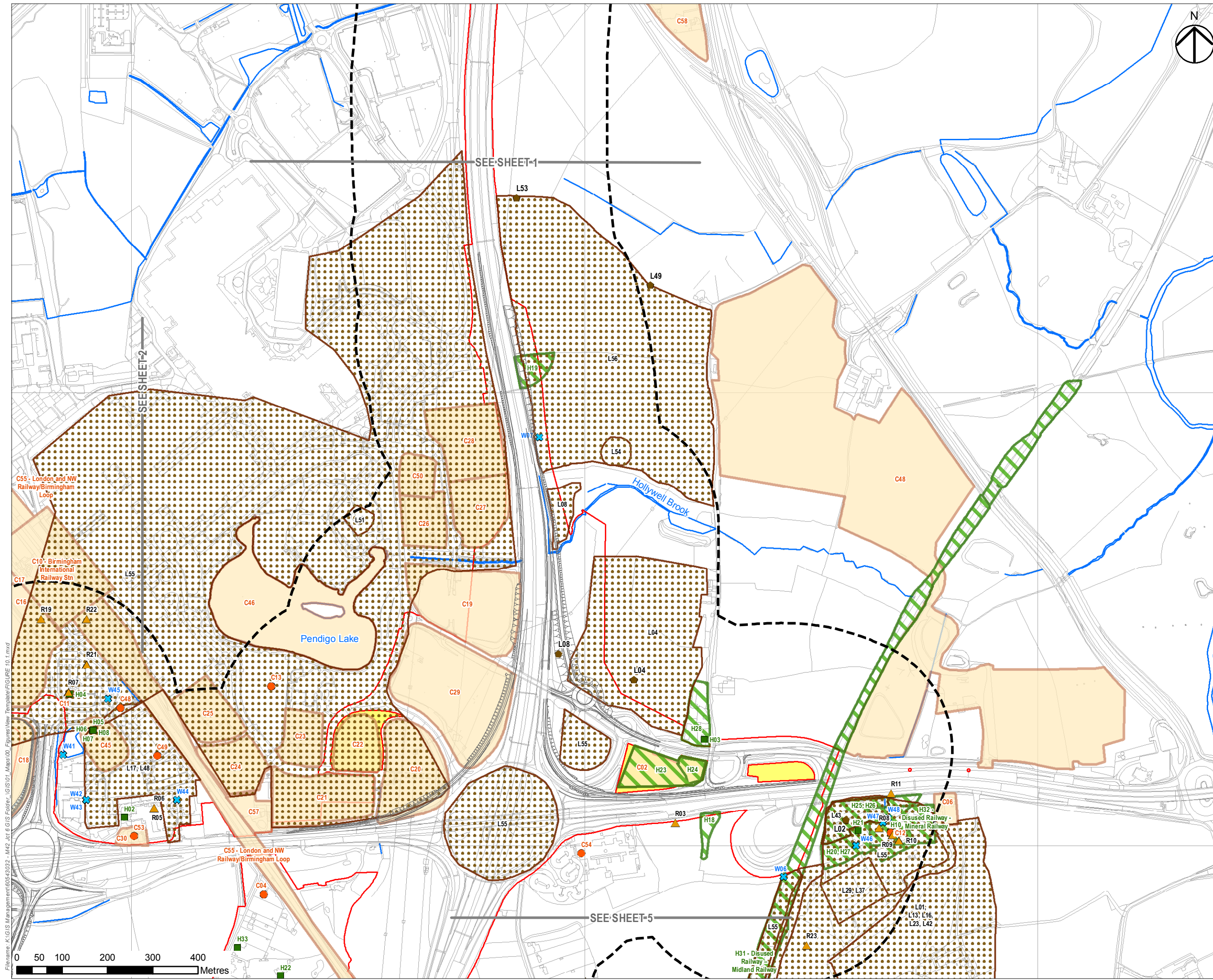
Drawing Title
FIGURE 10.1 SOURCES/CONSTRAINTS PLAN SHEET 2 OF 7

Designed RG	Drawn GB	Checked RG	Approved JG	Date 12/12/18
Internal Project No 60543032		Suitability D7		
Scale @ A3 1:7,500		Zone M42		

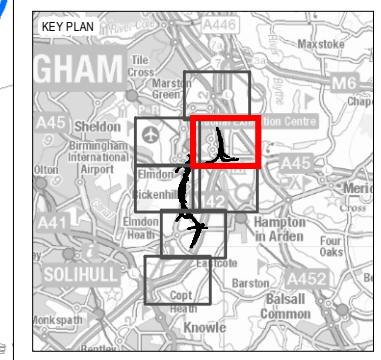
THIS DOCUMENT HAS BEEN PREPARED PURSUANT TO AND SUBJECT TO THE TERMS OF AECOM'S APPOINTMENT BY ITS CLIENT. AECOM ACCEPTS NO LIABILITY FOR ANY USE OF THIS DOCUMENT OTHER THAN BY ITS ORIGINAL CLIENT OR FOLLOWING AECOM'S EXPRESS AGREEMENT TO SUCH USE, AND ONLY FOR THE PURPOSES FOR WHICH IT WAS PREPARED AND PROVIDED.

Drawing Number HE551485 -ACM	Originator -EGN-	Volume -DR-DC-0002	Rev C01
Location M42 SW ZZ ZZ	Type 1	Role 1	Number 1

Filename: K:\GIS Management\60543032 - M42 Jct 6 GIS folder_GIS01_Figures\New Template\Figure 10.1.mxd



- NOTES**
THIS DRAWING IS TO BE READ IN CONJUNCTION WITH ALL OTHER RELEVANT DOCUMENTATION.
- LEGEND**
- THE SCHEME
 - LIMITS OF LAND TO BE ACQUIRED OR USED PERMANENTLY OR TEMPORARILY (THE ORDER LIMITS)
 - LIMITS OF LAND TO BE TEMPORARILY ACQUIRED FOR SIGNAGE INSTALLATION
 - LAND NOT INCLUDED WITHIN THE ORDER LIMITS
 - 250M BUFFER
- POTENTIAL CONTAMINATION SOURCES**
- CURRENT LAND USE
 - HISTORIC LAND USE
 - LANDFILLS AND OTHER WASTE FEATURES
 - ▲ OTHER REGULATED ACTIVITIES
 - ✕ DISCHARGE CONSENTS
 - POTENTIAL GASSING FEATURES (LANDFILLS, WASTE AND INFILLED GROUND)
 - HISTORICAL LAND USE
 - CURRENT LAND USE



FIRST ISSUE	GB	JG	12/12/18	C01
Revision Details	By	Check	Date	Suffix

Purpose of Issue: **DCO SUBMISSION**

Client: **Highways England**
 Floor 5
 Two Colmore Square
 38 Colmore Circus
 B4 6BN

Development Consent Order Number: **TR010027**

Project Title: **M42 JUNCTION 6 IMPROVEMENT**

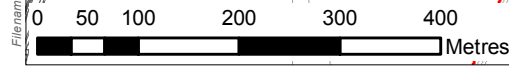
Drawing Title: **FIGURE 10.1 SOURCES/CONSTRAINTS PLAN SHEET 3 OF 7**

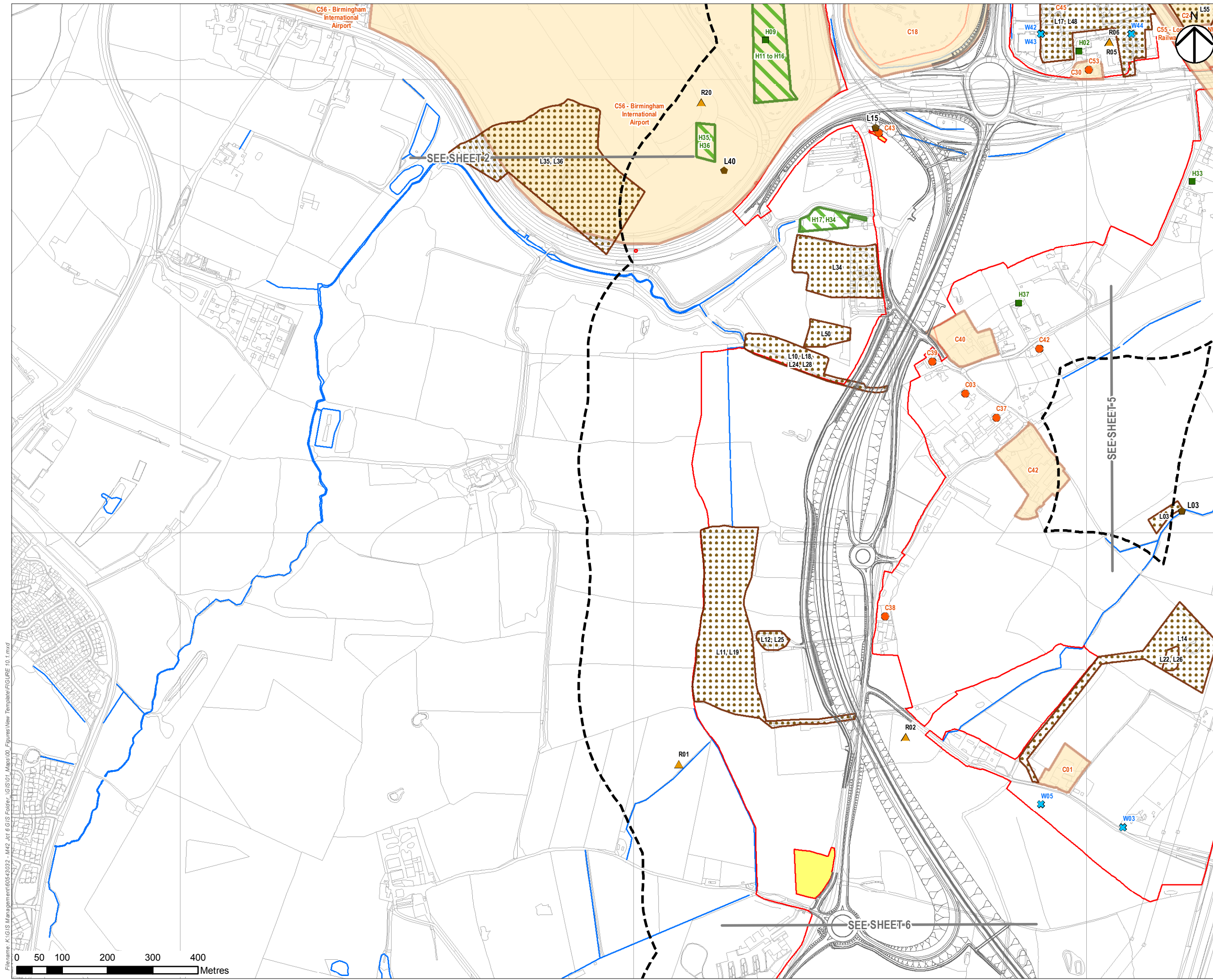
Designed	Drawn	Checked	Approved	Date
RG	RG	RG	JG	12/12/18
Internal Project No	Suitability			
60543032	D7			
Scale @ A3	Zone			
1:7,500	M42			

THIS DOCUMENT HAS BEEN PREPARED PURSUANT TO AND SUBJECT TO THE TERMS OF AECOM'S APPOINTMENT BY ITS CLIENT. AECOM ACCEPTS NO LIABILITY FOR ANY USE OF THIS DOCUMENT OTHER THAN BY ITS ORIGINAL CLIENT OR FOLLOWING AECOM'S EXPRESS AGREEMENT TO SUCH USE, AND ONLY FOR THE PURPOSES FOR WHICH IT WAS PREPARED AND PROVIDED.

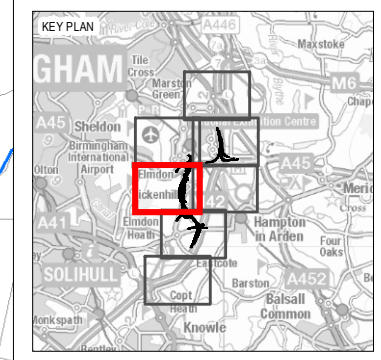
Drawing Number	Originator	Volume	Rev
HE551485 -ACM	-EGN-		C01
M42_SW_ZZ_ZZ	-DR-DC-0003		
Location	Type	Role	Number

Filename: K:\GIS Management\60543032 - M42 Jct 6 GIS folder - GIS\01 - Figures\New Template\Figure 10.1.mxd





- NOTES**
THIS DRAWING IS TO BE READ IN CONJUNCTION WITH ALL OTHER RELEVANT DOCUMENTATION.
- LEGEND**
- THE SCHEME
 - LIMITS OF LAND TO BE ACQUIRED OR USED PERMANENTLY OR TEMPORARILY (THE ORDER LIMITS)
 - LIMITS OF LAND TO BE TEMPORARILY ACQUIRED FOR SIGNAGE INSTALLATION
 - LAND NOT INCLUDED WITHIN THE ORDER LIMITS
 - 250M BUFFER
- POTENTIAL CONTAMINATION SOURCES**
- CURRENT LAND USE
 - HISTORIC LAND USE
 - ▲ LANDFILLS AND OTHER WASTE FEATURES
 - ▲ OTHER REGULATED ACTIVITIES
 - ✕ DISCHARGE CONSENTS
 - POTENTIAL GASSING FEATURES (LANDFILLS, WASTE AND INFILLED GROUND)
 - HISTORICAL LAND USE
 - CURRENT LAND USE



FIRST ISSUE	GB	JG	12/12/18	C01
Revision Details	By	Check	Date	Suffix

Purpose of Issue
DCO SUBMISSION

Client
Highways England
Floor 5
Two Colmore Square
38 Colmore Circus
B4 6BN



Development Consent Order Number
TR010027

Project Title
M4 JUNCTION 6 IMPROVEMENT

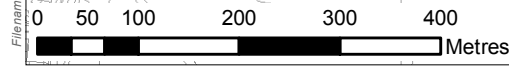
Drawing Title
FIGURE 10.1 SOURCES/CONSTRAINTS PLAN SHEET 4 OF 7

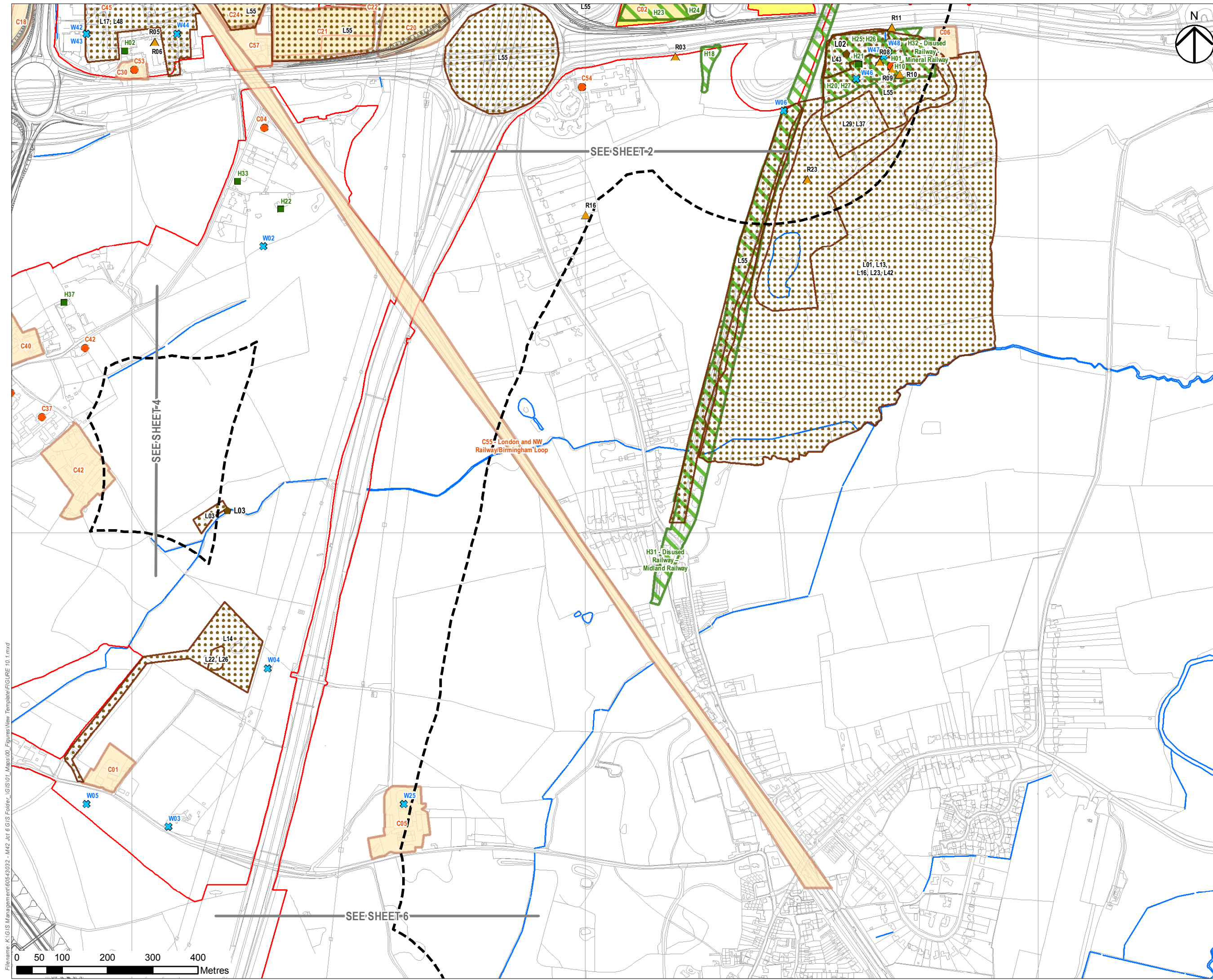
Designed	Drawn	Checked	Approved	Date
RG	GB	RG	JG	12/12/18
Internal Project No	Suitability			
60543032	D7			
Scale @ A3	Zone			
1:7,500	M42			

THIS DOCUMENT HAS BEEN PREPARED PURSUANT TO AND SUBJECT TO THE TERMS OF AECOM'S APPOINTMENT BY ITS CLIENT. AECOM ACCEPTS NO LIABILITY FOR ANY USE OF THIS DOCUMENT OTHER THAN BY ITS ORIGINAL CLIENT OR FOLLOWING AECOM'S EXPRESS AGREEMENT TO SUCH USE, AND ONLY FOR THE PURPOSES FOR WHICH IT WAS PREPARED AND PROVIDED.

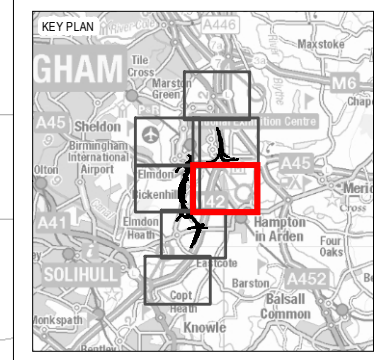
Drawing Number	Originator	Volume	Rev
HE551485 -ACM	-EGN-		C01
M42_SW_ZZ_ZZ	-DR-DC-0004		
Location	Type	Role	Number

Filename: K:\GIS Management\60543032 - M42 Jct 6 GIS folder - GIS\01 - Maps\00 - Figures\New Template\Figure 10.1.mxd





- NOTES**
THIS DRAWING IS TO BE READ IN CONJUNCTION WITH ALL OTHER RELEVANT DOCUMENTATION.
- LEGEND**
- THE SCHEME
 - LIMITS OF LAND TO BE ACQUIRED OR USED PERMANENTLY OR TEMPORARILY (THE ORDER LIMITS)
 - LIMITS OF LAND TO BE TEMPORARILY ACQUIRED FOR SIGNAGE INSTALLATION
 - LAND NOT INCLUDED WITHIN THE ORDER LIMITS
 - 250M BUFFER
- POTENTIAL CONTAMINATION SOURCES**
- CURRENT LAND USE
 - HISTORIC LAND USE
 - LANDFILLS AND OTHER WASTE FEATURES
 - ▲ OTHER REGULATED ACTIVITIES
 - ✕ DISCHARGE CONSENTS
 - POTENTIAL GASSING FEATURES (LANDFILLS, WASTE AND INFILLED GROUND)
 - HISTORICAL LAND USE
 - CURRENT LAND USE



FIRST ISSUE	GB	JG	12/12/18	C01
Revision Details	By	Check	Date	Suffix

Purpose of Issue
DCO SUBMISSION

Client
Highways England
Floor 5
Two Colmore Square
38 Colmore Circus
B4 6BN



Development Consent Order Number
TR010027

Project Title
M42 JUNCTION 6 IMPROVEMENT

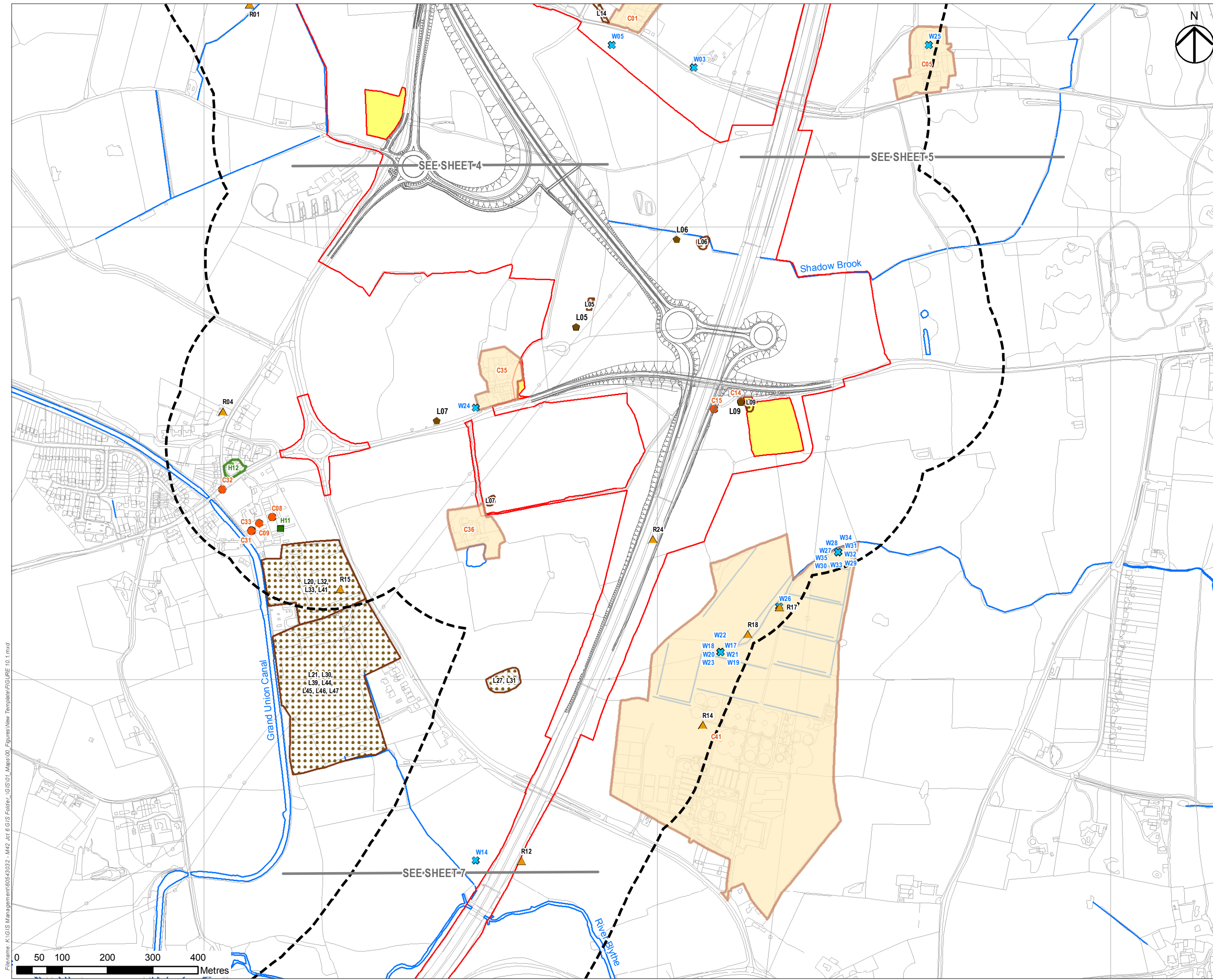
Drawing Title
FIGURE 10.1 SOURCES/CONSTRAINTS PLAN SHEET 5 OF 7

Designed RG	Drawn GB	Checked RG	Approved JG	Date 12/12/18
Internal Project No 60543032	Suitability D7		Zone M42	
Scale @ A3 1:7,500				

THIS DOCUMENT HAS BEEN PREPARED PURSUANT TO AND SUBJECT TO THE TERMS OF AECOM'S APPOINTMENT BY ITS CLIENT. AECOM ACCEPTS NO LIABILITY FOR ANY USE OF THIS DOCUMENT OTHER THAN BY ITS ORIGINAL CLIENT OR FOLLOWING AECOM'S EXPRESS AGREEMENT TO SUCH USE, AND ONLY FOR THE PURPOSES FOR WHICH IT WAS PREPARED AND PROVIDED.

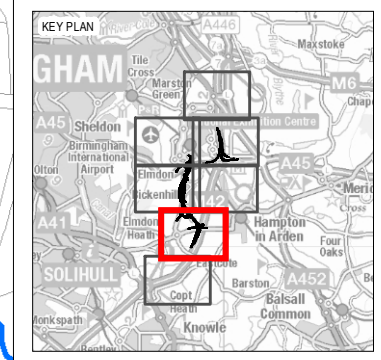
Drawing Number HE551485 -ACM -EGN-	Originator M42_SW_ZZ_ZZ -DR-DC-0005	Volume 1	Rev C01
Location	Type	Role	Number

Filename: K:\GIS Management\60543032 - M42 Jct 6 GIS folder - GIS\01 - Figures\New Template\FIGURE 10.1.mxd



NOTES
THIS DRAWING IS TO BE READ IN CONJUNCTION WITH ALL OTHER RELEVANT DOCUMENTATION.

- LEGEND
- THE SCHEME
 - LIMITS OF LAND TO BE ACQUIRED OR USED PERMANENTLY OR TEMPORARILY (THE ORDER LIMITS)
 - LIMITS OF LAND TO BE TEMPORARILY ACQUIRED FOR SIGNAGE INSTALLATION
 - LAND NOT INCLUDED WITHIN THE ORDER LIMITS
 - 250M BUFFER
- POTENTIAL CONTAMINATION SOURCES
- CURRENT LAND USE
 - HISTORIC LAND USE
 - LANDFILLS AND OTHER WASTE FEATURES
 - ▲ OTHER REGULATED ACTIVITIES
 - ✕ DISCHARGE CONSENTS
 - POTENTIAL GASSING SOURCES (LANDFILLS, WASTE AND INFILLED GROUND)
 - HISTORICAL LAND USE
 - CURRENT LAND USE



FIRST ISSUE	GB	JG	12/12/18	C01
Revision Details	By	Check	Date	Suffix

Purpose of Issue
DCO SUBMISSION

Client
Highways England
Floor 5
Two Colmore Square
38 Colmore Circus
B4 6BN



Development Consent Order Number
TR010027

Project Title
M42 JUNCTION 6 IMPROVEMENT

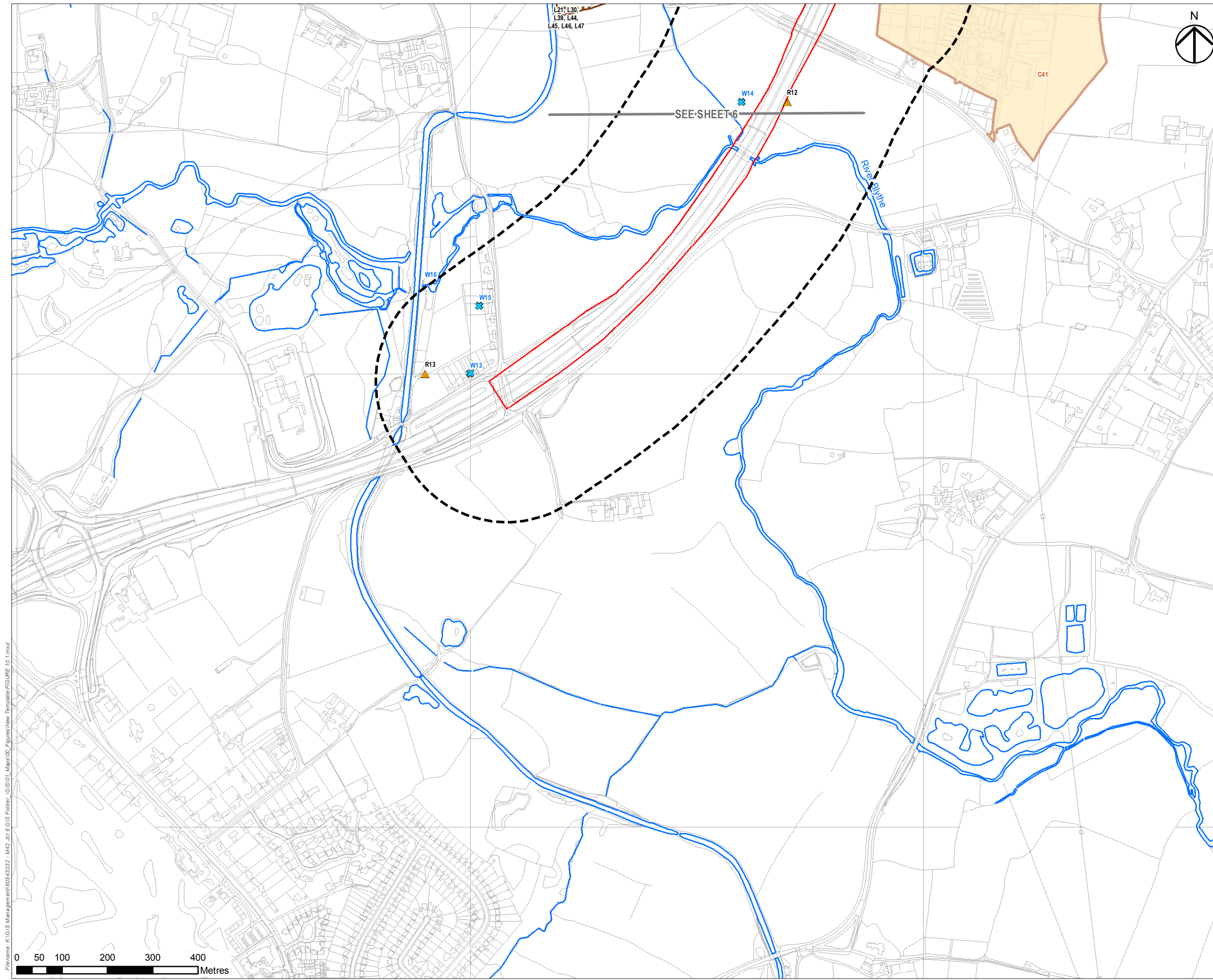
Drawing Title
FIGURE 10.1 SOURCES/CONSTRAINTS PLAN SHEET 6 OF 7

Designed RG	Drawn GB	Checked RG	Approved JG	Date 12/12/18
Internal Project No 60543032	Suitability D7			
Scale @ A3 1:7,500	Zone M42			

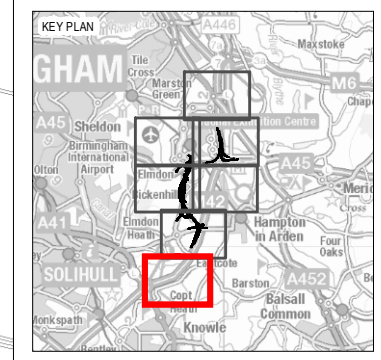
THIS DOCUMENT HAS BEEN PREPARED PURSUANT TO AND SUBJECT TO THE TERMS OF AECOM'S APPOINTMENT BY ITS CLIENT. AECOM ACCEPTS NO LIABILITY FOR ANY USE OF THIS DOCUMENT OTHER THAN BY ITS ORIGINAL CLIENT OR FOLLOWING AECOM'S EXPRESS AGREEMENT TO SUCH USE, AND ONLY FOR THE PURPOSES FOR WHICH IT WAS PREPARED AND PROVIDED.

Drawing Number HE551485	Originator -ACM	Volume -EGN-	Rev C01
Location M42_SW_ZZ_ZZ	Type -DR-DC-0006	Role 1	Number 1

Filename: K:\GIS Management\60543032 - M42 Jct 6 GIS Folder_GIS01_Maps\00_Figures\New Template\FIGURE 10.1.mxd



- NOTES**
THIS DRAWING IS TO BE READ IN CONJUNCTION WITH ALL OTHER RELEVANT DOCUMENTATION.
- LEGEND**
- THE SCHEME
 - LIMITS OF LAND TO BE ACQUIRED OR USED PERMANENTLY OR TEMPORARILY (THE ORDER LIMITS)
 - LIMITS OF LAND TO BE TEMPORARILY ACQUIRED FOR SIGNAGE INSTALLATION
 - LAND NOT INCLUDED WITHIN THE ORDER LIMITS
 - 250M BUFFER
- POTENTIAL CONTAMINATION SOURCES**
- CURRENT LAND USE
 - HISTORIC LAND USE
 - LANDFILLS AND OTHER WASTE FEATURES
 - ▲ OTHER REGULATED ACTIVITIES
 - ✕ DISCHARGE CONSENTS
 - POTENTIAL GASSING FEATURES (LANDFILLS, WASTE AND INFILLED GROUND)
 - HISTORICAL LAND USE
 - CURRENT LAND USE



FIRST ISSUE	GB	JG	12/12/18	C01
Revision Details	By	Check	Date	Suffix

Purpose of Issue

DCO SUBMISSION

Client
Highways England
Floor 5
Two Colmore Square
38 Colmore Circus
B4 6BN



Development Consent Order Number
TR010027

Project Title
M42 JUNCTION 6 IMPROVEMENT

Drawing Title
FIGURE 10.1 SOURCES/CONSTRAINTS PLAN SHEET 7 OF 7

Designed RG	Drawn GB	Checked RG	Approved JG	Date 12/12/18
Internal Project No 60543032		Suitability D7		
Scale @ A3 1:7,500		Zone M42		

THIS DOCUMENT HAS BEEN PREPARED PURSUANT TO AND SUBJECT TO THE TERMS OF AECOM'S APPOINTMENT BY ITS CLIENT. AECOM ACCEPTS NO LIABILITY FOR ANY USE OF THIS DOCUMENT OTHER THAN BY ITS ORIGINAL CLIENT OR FOLLOWING AECOM'S EXPRESS AGREEMENT TO SUCH USE, AND ONLY FOR THE PURPOSES FOR WHICH IT WAS PREPARED AND PROVIDED.

Drawing Number HE551485 -ACM	Originator -EGN-	Volume -DR-DC-0007	Rev C01
Location M42_SW_ZZ_ZZ		Type Role Number	

Filename: K:\GIS Management\60543032 - M42 Jct 6 GIS Folder - GIS01 - Figures\New Template\FIGURE 10.1.mxd